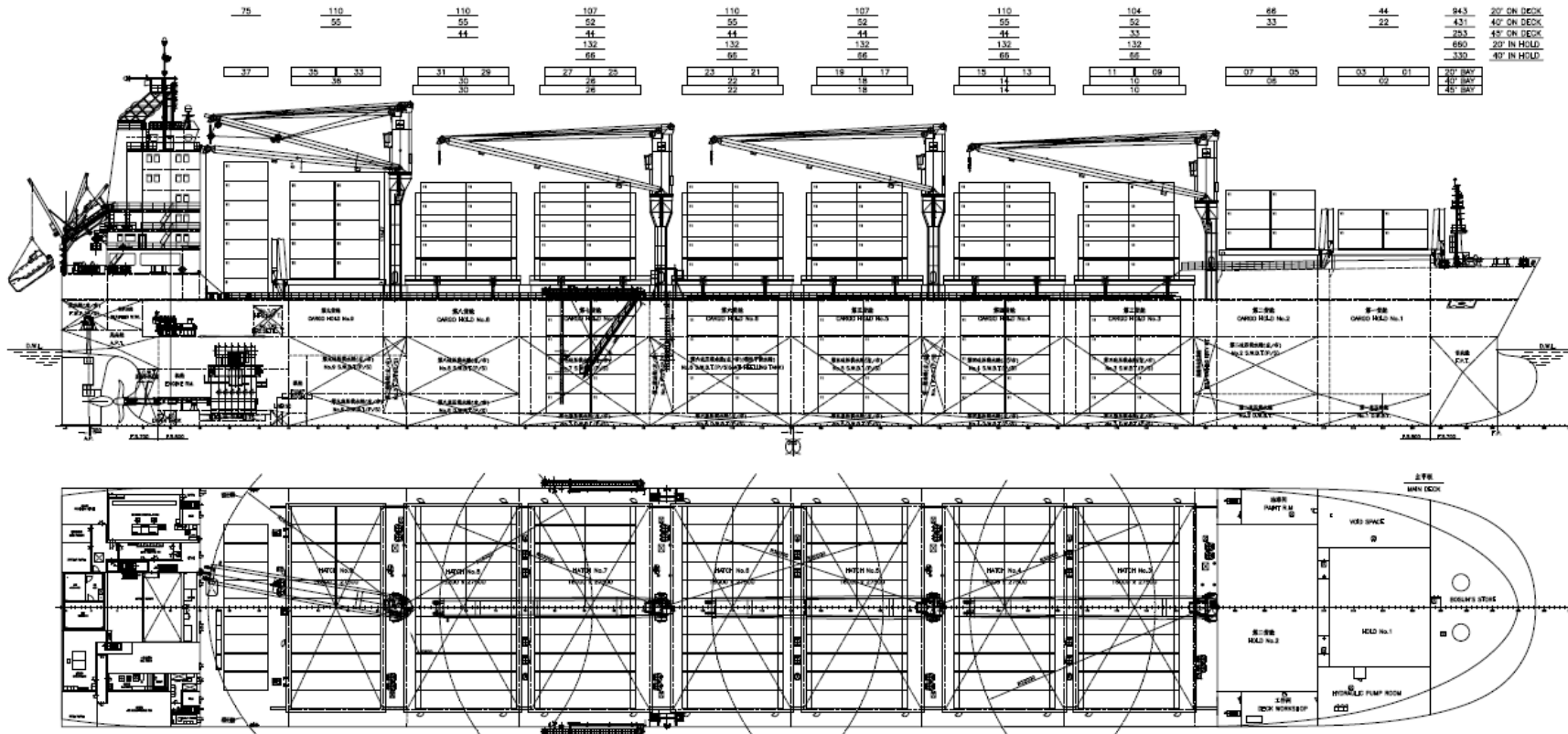


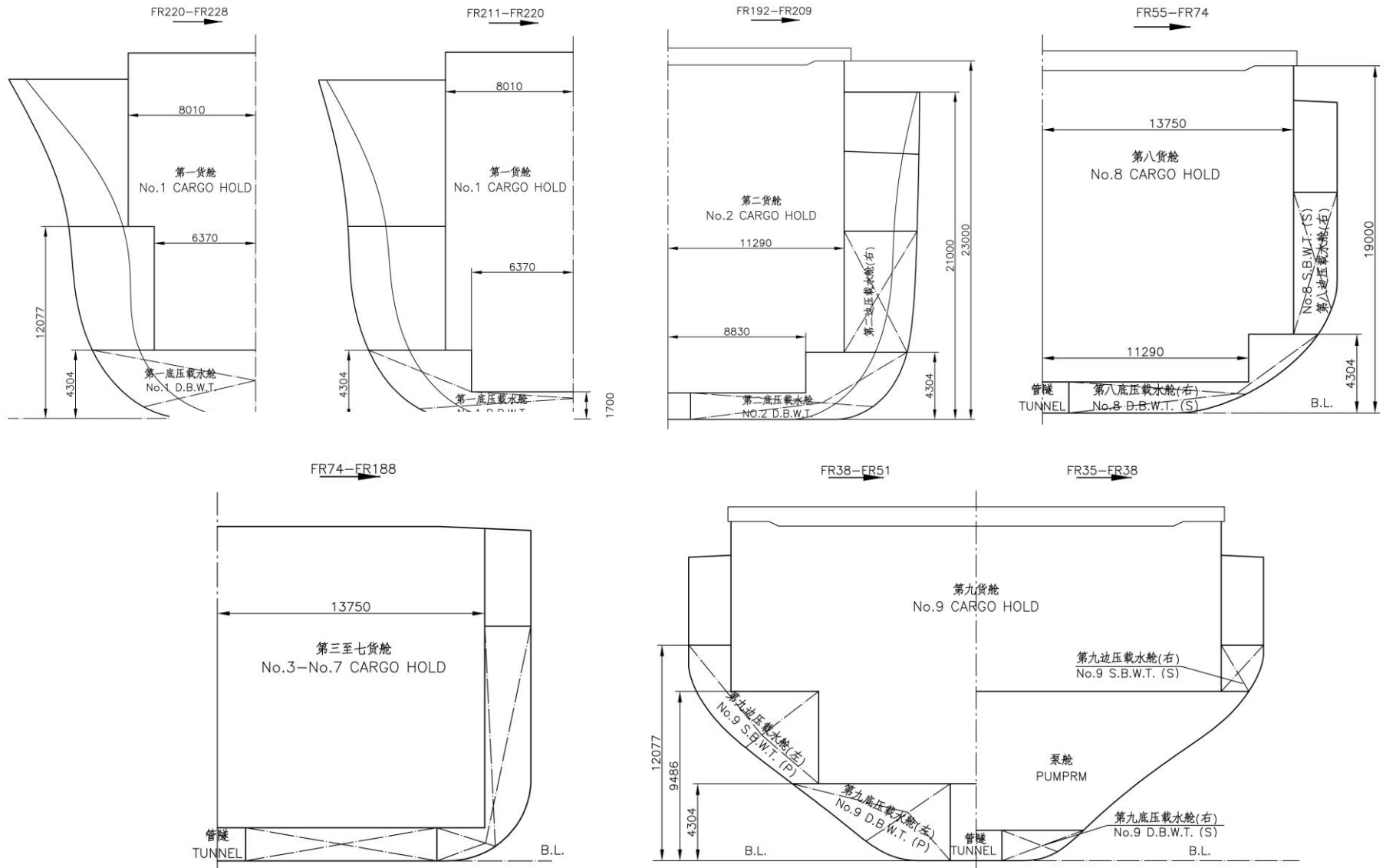
NAVARRA CLASS



NAVARRA CLASS – DESCRIPTION

Type	singledeck open hatch type, general cargo carrier 4 cranes, engine and bridge aft, grain fitted	Permissible loads	cargo hold tank tops: ABT. 20MT/M ² main deck: ABT. 4.0 MT/M ²
Built	NAVARRA 2010 DALMATIA 2011	Capacity of tanks	hatch covers: ABT. 3.0 MT/M ² heavy fuel oil tank: ABT. 2.200 CBM diesel oil: ABT. 136 CBM ballast water tank: ABT. 16.400 CBM fresh water ABT. 230 CBM
Deadweight	deadweight at scantling drought 12.40 m ABT 51.600 MTS	Speed	14 knots 31 MTS no diesel at sea CO ₂ fitted
Principal dimensions	length, overall: ABT. 199.90 m breadth, moulded: ABT. 32.26 m depth, moulded: ABT. 17.00 m scantling draft : ABT. 12.40 m	Main engine	Mitsubishi 6UEC50LSE 9960 KW 124 r/min
Cargo crane	4 cranes (between hold no. 2-3, 4-5, 6-7, 8-9) hoisting load: ABT. 40 MT (hook) hoisting speed: ABT. 18.5 m/min . working radius: ABT. min. 3.5 m – max. 33 m slewing angle: 360 degrees		
Holds	9 holds no. 1 12.80 m x 16.02 m/3276.4 CBM no. 2 cargo hold 12.80 m x 22.60 m/5741.3 CBM no. 3-7 cargo hold 16.00 m x 27.50 m/7612.0 CBM no. 8 cargo hold 15.20 m x 27.50 m/7036.7 CBM no. 9 cargo hold 12.80 m x 27.50 m/4300.7 CBM		
Hatches	hatch no.1, no.2 & no.9: steel end folding type, double skin construction, hydraulically operated with grain and cement loading openings. the hatches to be strengthened suitable for carrying containers. hatch no.3 to no.8: piggy-back type, double skin construction hydraulically operated with grain and cement feeder holes ABT. 59890.0 CBM (9 holds) on deck only: 273 TEU (75 TEU + 99 FEU)		
Cargo capacities	single deck open hatch type general cargo carrier		
Container intake	4 cranes, engine and bridge aft, grain fitted		

NAVARRA CLASS



NAVARRA CLASS – HOLD DIMENSION & CARGO CAPACITY

NO.	COMPARTMENT	LOCATION Fr. to Fr.	VOLUME (m ³) 100% FULL	WEIGHT (t)	CENTER OF GRAVITY (m)			MAX. FREE. SURFACE MOMENT (m ⁴)
					LONG. (A.P)	TRANS. (C.L.)	VERT. (B.L)	
CARGO HOLD			(ρ = 1,00 t/m2)					
1	No. 1 Cargo hold	211 ~ 228	4125.7	4125.7	174.009	0.000	13.206	4659.6
2	No. 2 Cargo hold	192 ~ 209	6366.7	6366.7	159.100	0.000	12.606	13047.6
3	No. 3 Cargo hold	168 ~ 188	7612	7612	141.1	0.000	10.350	27729.2
4	No. 4 Cargo hold	146 ~ 166	7612	7612	123.5	0.000	10.350	27729.2
5	No. 5 Cargo hold	122 ~ 142	7612	7612	14.3	0.000	10.350	27729.2
6	No. 6 Cargo hold	100 ~ 120	7612	7612	86.7	0.000	10.350	27729.2
7	No. 7 Cargo hold	76 ~ 96	7612	7612	67.5	0.000	10.350	27729.2
8	No. 8 Cargo hold	55 ~ 74	7036.7	7036.7	50.3	0.000	10.553	26342.7
9	No. 9 Cargo hold	35 ~ 51	4300.7	4300.7	33.366	0.000	12.617	22183.3
Total			59890	59890				

