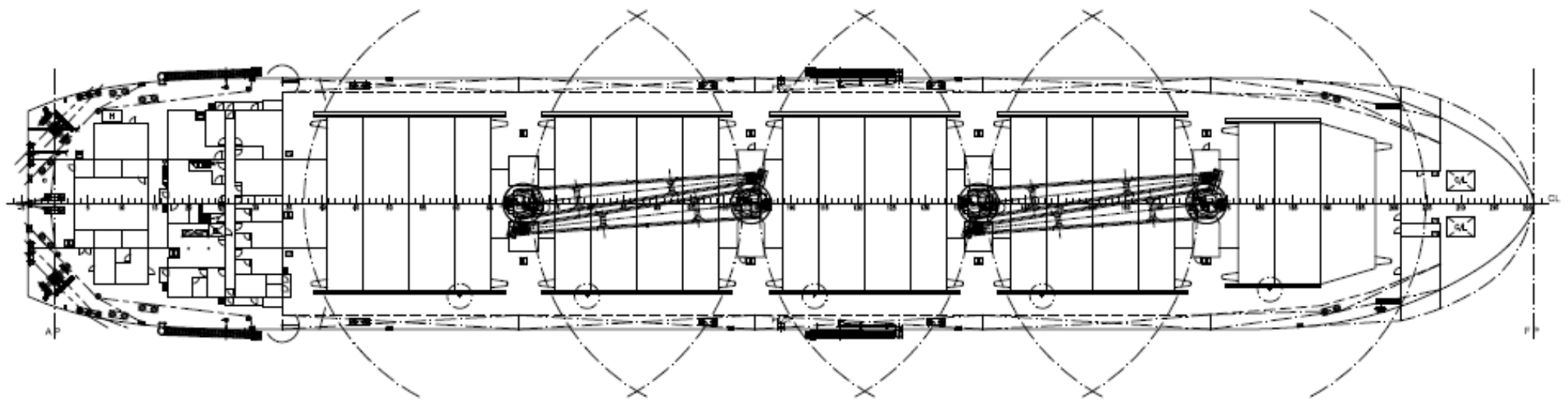
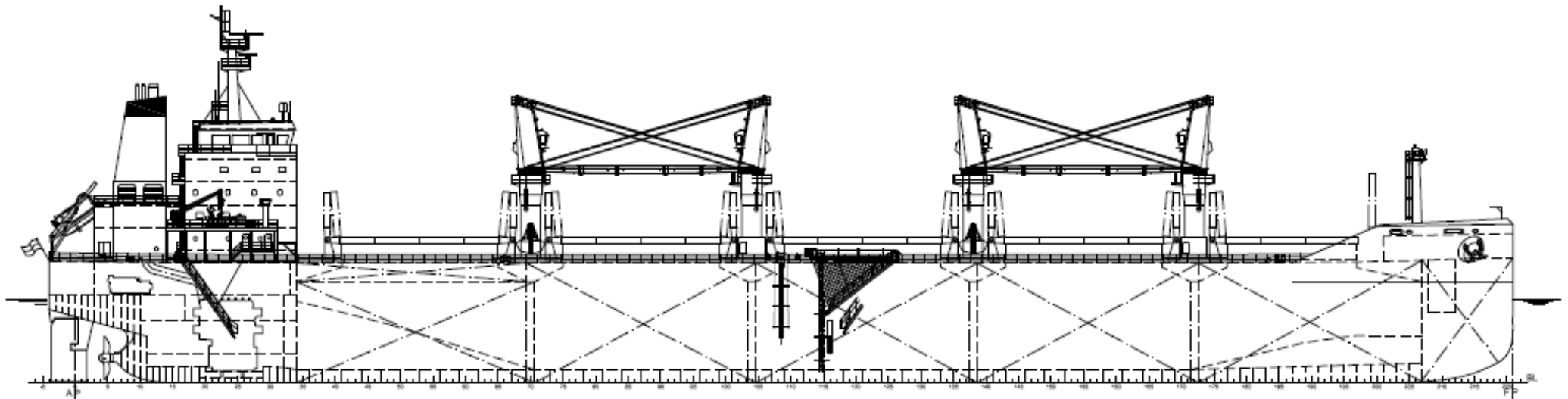


AQUITANIA CLASS



AQUITANIA CLASS – DESCRIPTION

Type	modern single deck bulk carrier, partly box shaped	Deck Strength	Tank top all cargo holds	22,0 mtons/m ²
	4 cranes, 4 grabs		Main-Deck	2,5 mtons/m ²
Built	Aquitania 2012, Patagonia 2012, Alentejo 2013		Hatch covers	2.5 mtons/m ²
Deadweight	DWT at scantling 34,845 t	Capacity of tanks	Heavy fuel oil tanks:	1.734,600 m ³
Principal dimensions	Length Overall	179,96 m	Diesel oil tanks	213,800 m ³
	Breath Overall	30,00 m	Ballast water tank: (excl. CH 3)	12.948,900 m ³
	Depth Moulded	14,71 m	Fresh water tanks	249,300 m ³
	Height from Keel to Highest Point	47,00 m	Wash water holding tanks	221,800 m ³
	Gross tonnage	24.166,000	Speed	Service Speed Fully Laden
Net tonnage	11.556,000		Ballast	14.0 knots
			De-Balasting Speed	1.500,00 m ³ /h

CARGO SPACE

Gear	4 cranes + 4 grabs 12 m ³	Main engine	Main engine MAN 5S50ME-B
Hatches/Holds	Folding type hatches		
Hatch Dimensions (L X W)	No 1	16,00 x 15,0/18,70 mtrs	
	No 2, 3, 4, 5	19,20 x 20,30 mtrs	
Hold Dimensions (L X W)	No 1	27,50 x 15,69/26,60 mtrs	
	No 2, 3, 4	26,20 x 26,60 mtrs	
	No 5	28,30 x 26,60 mtrs	
Grain Cubic Breakdown	No 1	7.948,000 m ³	
	No 2	9.790,000 m ³	
	No 3, 4	9.791,000 m ³	
	No 5	9.428,000 m ³	
Bale Cubic Breakdown	No 1	7.819,000 m ³	
	No 2, 3, 4	9.525,000 m ³	
	No 5	9.276,000 m ³	