

since 1865



Bertling Logistics Services, Inc.

BERTLING RAILCARS



YOUR CARGO IS IN GOOD HANDS

Bertling is an industry leader in the transportation of heavy-lift, over-dimensional & extra-large cargoes around the world. Skilled in-house technical teams offer well planned and highly efficient ways to safely move your cargo throughout the world.

BERTLING IN THE USA

In the USA, Bertling has been operating since 1995 and has presence in Houston, Dallas & Miami. Bertling manages a large scale of logistics projects for a varied client base. Special expertise lies in the fields of Oil & Gas, Power Distribution, Construction and Mining.



SKILLED EXPERTS
WORLDWIDE



OWN FLEET OF
MODERN VESSELS



STRONG SYSTEMS &
GROUPWIDE IT



EXCELLING IN HSSE,
QM & COMPLIANCE



GLOBAL OFFICE NETWORK &
DEDICATED PARTNERS



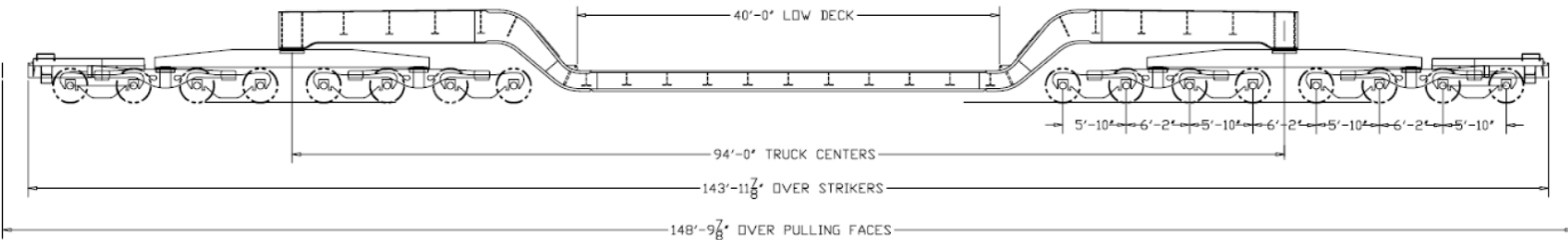
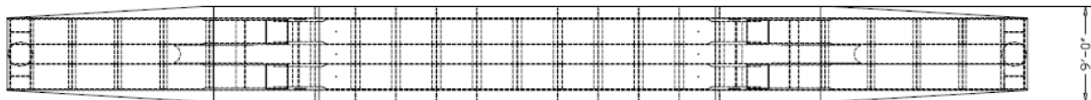
SOCIAL RESPONSIBILITY IN
EVERY STEP WE TAKE

ABOUT THE RAILCARS

Bertling Logistics Services, Inc. operates two 16-axle depressed center railcars in North America. The railcars are designed to transport heavy loads, such as transformers, turbines, generators and engines.

TECHNICAL SPECIFICATIONS

		Load %-Estimated	
Load Deck Length:	40 ft	0%	50 in
Overall Car Length:	148 ft/10 in	25%	46 in
Railcar Lightweight:	310,000 lbs	50%	42 in
Railcar Capacity:	835,000 lbs	75%	38 in
Gross Combined:	1,145,000 lbs	100%	34 in



RAILCARS IN ACTION

Bertling's railcars have recently been employed for the operations of the largest HVDC Project in North America in 30 years. Find out more on: <http://www.bertling.com/case-studies/>.

CONTACT

Would you like to find out more about the Bertling Railcars or make an inquiry? Feel free to contact:

Keith Lincoln
Director Logistics



Phone: +1 281 774 2300



Email: keith.lincoln@bertling.com