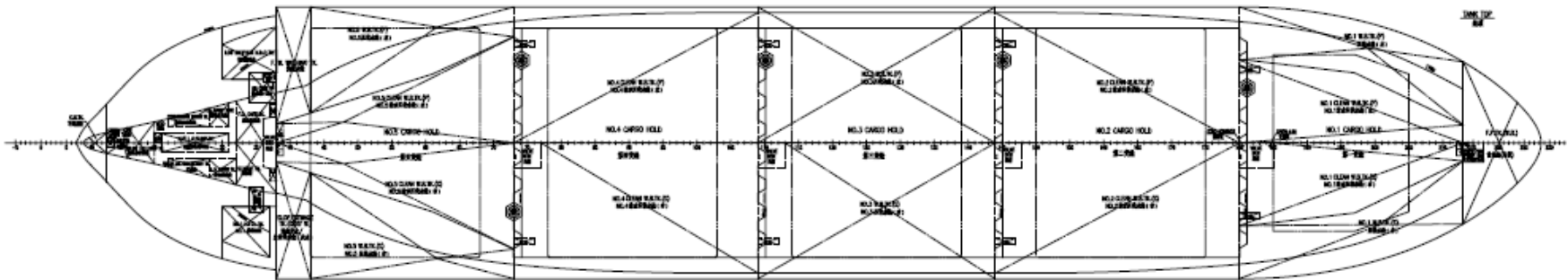
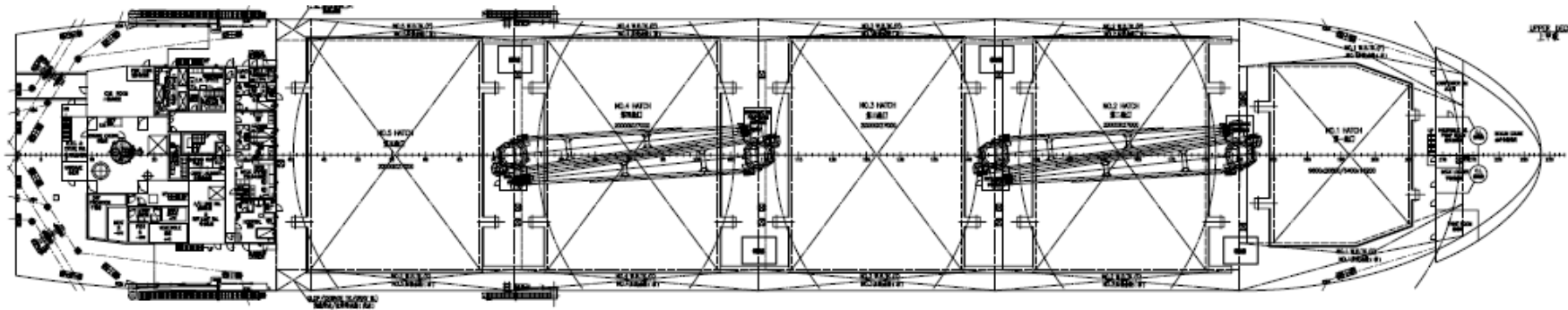
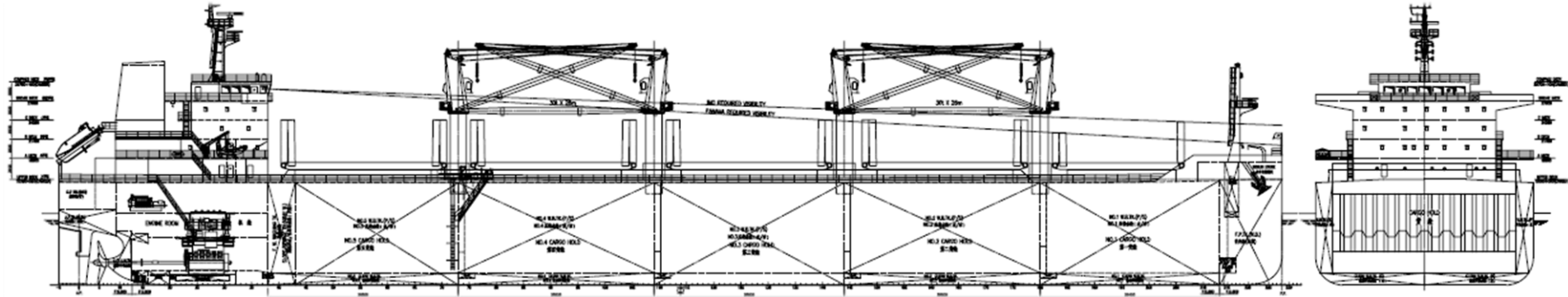


# GREEN DOLPHIN CLASS



## GREEN DOLPHIN CLASS

<b>Type</b>	38.800 DWT OPEN HATCH HANDY SIZE BULK CARRIER		<b>Tank Top Dimensions</b>	No.1	26,4mtrs (L) x 19,5mtrs (W Aft) and 4,23mtrs (W Fwd)
<b>Built</b>	BEIRA 2017			No.2	28,8mtrs (L) x 27,0mtrs(W) – Fully Box Shaped
<b>DWT (Summer)</b>	40.047 mts			No.3	28,8mtrs(L) x 27,0mtrs(W) – Fully Box Shaped
<b>TPC</b>	53,9mt/cm – at scantling draft			No.4	28,8mtrs(L) x 27,0mtrs(W) – Fully Box Shaped
<b>Principal dimensions</b>	Length, over all: Abt.. 180,00 mtrs			No.5	28,0mtrs(L) x 4,5mtrs(W Aft) and 25,0mtrs(W Fwd)
<b>Principal dimensions</b>	Beam, moulded: Abt. 32,00 mtrs		<b>Permissible loads</b>	Uniform loading of tank tops: Abt. 25mt/sqm	
	Depth, moulded: Abt. 15,00 mtrs		<b>Steel Coil Loading</b>	40mt (two tiers each of 20mt) x length 1800mm	
	Scantling draft: Abt. 10,50 mtrs, design draft: 9,5 mtrs		<b>Capacity of tanks</b>	Water ballast including clean ballast water tanks: 16.770cbm	
<b>Cargo crane</b>	Number of Cranes: 4 Electro Hydraulic			Water ballast excluding clean ballast water tanks: 12.500cbm	
<b>Cargo crane</b>	Max. Lifting Capacity: 35mt			Bunker Capacities: HFO-997cbm, MDO/MGO/LSMGO - 403cbm	
	Max. Outreach: 10,0mtrs – from ships rail			Fresh Water + Drinking Water: 286cbm	
	Hook Speed max load/empty: 20/40 mtrs/min			Laden: about 12,0 knots on about 13,0mt HFO (380cst)	
	Working Radius: 4,5mtrs to 26mtrs			Ballast: about 12,0 knots on about 11,5mt HFO (380cst)	
			<b>Eco Speed</b>	+ 1 Electric Generator, about 2,05mt HFO (380cst) @ sea load of 460 KW and 0,8mt HFO (380cst) for boiler when required.	
	Capacity of Holds:	Grain(cbm)	<b>CO2 Fitted:</b>	Yes	
<b>Holds (5)</b>	No.1	7.713,8	<b>Cargo Hold Ventilation:</b>	Explosion proof exhaust fans at 6 air changes per hour	
	No.2	11.229,6	<b>Deballasting time:</b>	about 9 hours	
	No.3	10.943,7			
	No.4	11.237,3			
	No.5	9.728,2			
	Total:	50.852,6			
<b>Hatches (5)</b>	hatch no.1				
	9,60mtrs/6,40mtrs(L) x 20,80mtrs/16,20mtrs (W) – Wide Hatch				
	hatch no.2-5				
	20,00mtrs(L) x 27,00mtrs(W) – Open Hatch				
	Height of Hold: 15,12mtrs				
	Max WLTHC in light ballast:	11,28mtrs			
	Type of covers: Steel End Folding Type, weather tight double skin construction, hydraulically operated, grain/cement openings.				